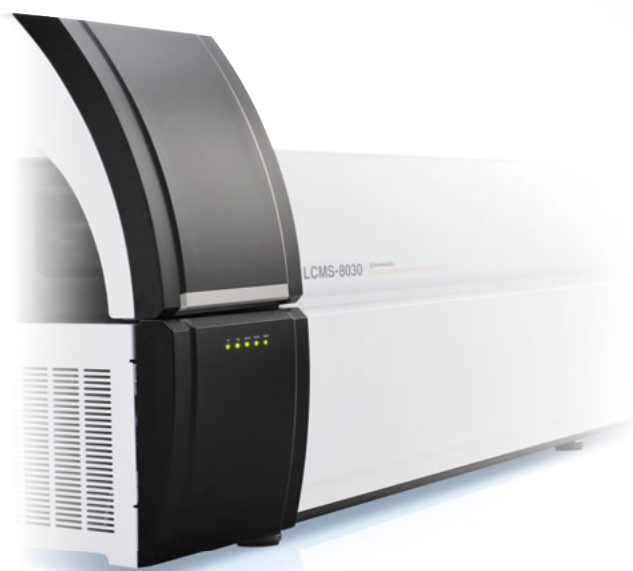


Ultra Fast Mass Spectrometry

Speed Beyond Comparison



Forensic



Electronics



Chemistry



Nano technology



Environment



Food



Molecular imaging



Life science



Pharmaceuticals



New energy

Ultra-High Speed

- Fusion of *Ultra Fast* MRM and *Ultra Fast* Polarity Switching of 15msec
- An *Ultra Fast* Scan Speed of 15,000 u/sec
- 500 MRMs per Second, the Most Ever Possible

User-Friendly

- Easy Maintenance for Minimized Instrument Downtime
- Single-vendor Solution Provides Seamless Operation
- Quantitation Browser for Effective Multi-analyte Quantitation

High Reliability

- Robust System Provides Long-term Data Stability
- UFsweeper™ Technology Dramatically Minimizes Cross Talk
- Excellent Linearity with Wide Dynamic Range

LCMS-8030

Triple Quadrupole Mass Spectrometer

Triple Quadrupole LC/MS/MS System

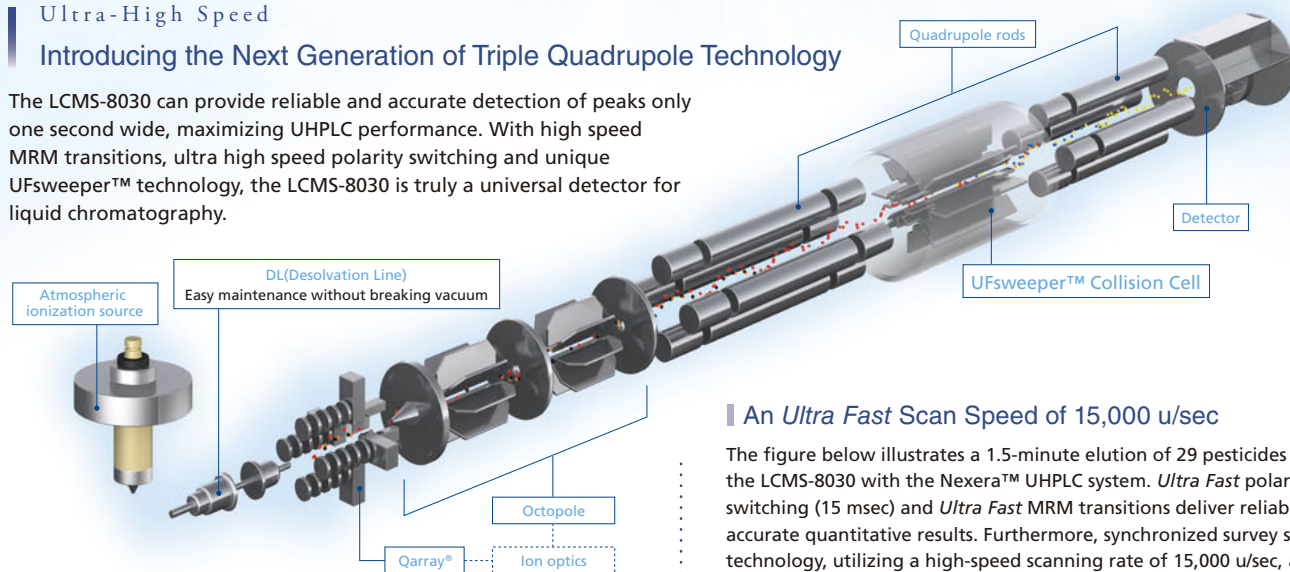
LCMS-8030

Triple Quadrupole Mass Spectrometer

Ultra-High Speed

Introducing the Next Generation of Triple Quadrupole Technology

The LCMS-8030 can provide reliable and accurate detection of peaks only one second wide, maximizing UHPLC performance. With high speed MRM transitions, ultra high speed polarity switching and unique UFsweeper™ technology, the LCMS-8030 is truly a universal detector for liquid chromatography.

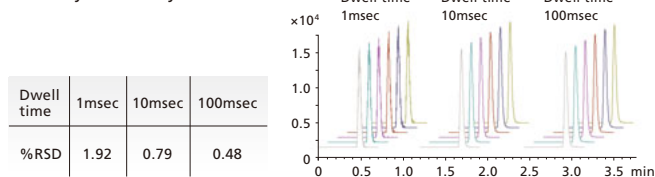


An Ultra Fast Scan Speed of 15,000 u/sec

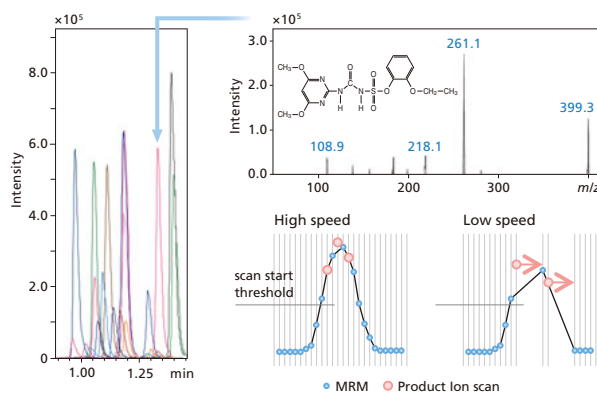
The figure below illustrates a 1.5-minute elution of 29 pesticides using the LCMS-8030 with the Nexera™ UHPLC system. *Ultra Fast* polarity switching (15 msec) and *Ultra Fast* MRM transitions deliver reliable and accurate quantitative results. Furthermore, synchronized survey scan technology, utilizing a high-speed scanning rate of 15,000 u/sec, allows full spectrum scans within a series of MRM measurements, providing confirmation of target compounds with information-rich product ion spectra.

500 MRM Transitions in One Second is Now Possible!

In the UFsweeper™ collision cell, there is no ion loss even at a 1 msec dwell time as ions are accelerated from the pressurized collision cell without losing momentum. In addition, higher RF power capability minimizes the pause time between each MRM transition. For the first time, true high-throughput analysis without sacrificing ion intensity is a reality.



Dwell time	1msec	10msec	100msec
%RSD	1.92	0.79	0.48



High Reliability

Even during *Ultra Fast* Measurements, the LCMS-8030 Provides Reliable and Reproducible Data

The LCMS-8030 delivers reliability even while performing *Ultra Fast* MRM transitions and polarity switching. *Ultra Fast* analysis coupled with a wider dynamic range has been achieved with an *Ultra Fast* pulse-counting detector and conversion dynode system. Furthermore, UFsweeper™ technology efficiently accelerates ions out of the collision cell and dramatically minimizes cross talk.

User-Friendly

The Strength of a Single-vendor Solution Results in Seamless Operation

The combination of Shimadzu's LCMS-8030 and Nexera™ UHPLC brings together the latest hardware on a single platform for the next generation of *Ultra Fast* technology. All software operations are handled seamlessly, reducing PC conflicts and the need for user intervention. In addition, the robust design of the LCMS-8030 allows maximum uptime and results in a system that can handle the most complex matrices. Easy maintenance of the desolvation line without breaking vacuum minimizes instrument downtime.



SHIMADZU CORPORATION. International Marketing Division
3. Kanda-Nishikicho 1-chome, Chiyoda-ku, Tokyo 101-8448, Japan
Phone: 81(3)3219-5641 Fax: 81(3)3219-5710
URL <http://www.shimadzu.com>

Founded in 1875, Shimadzu Corporation, a leader in the development of advanced technologies, has a distinguished history of innovation built on the foundation of contributing to society through science and technology. We maintain a global network of sales, service, technical support and applications centers on six continents, and have established long-term relationships with a host of highly trained distributors located in over 100 countries. For information about Shimadzu, and to contact your local office, please visit our Web site at www.shimadzu.com



JQA-0376